

Parts List for Walking Floor/Tipper Kit

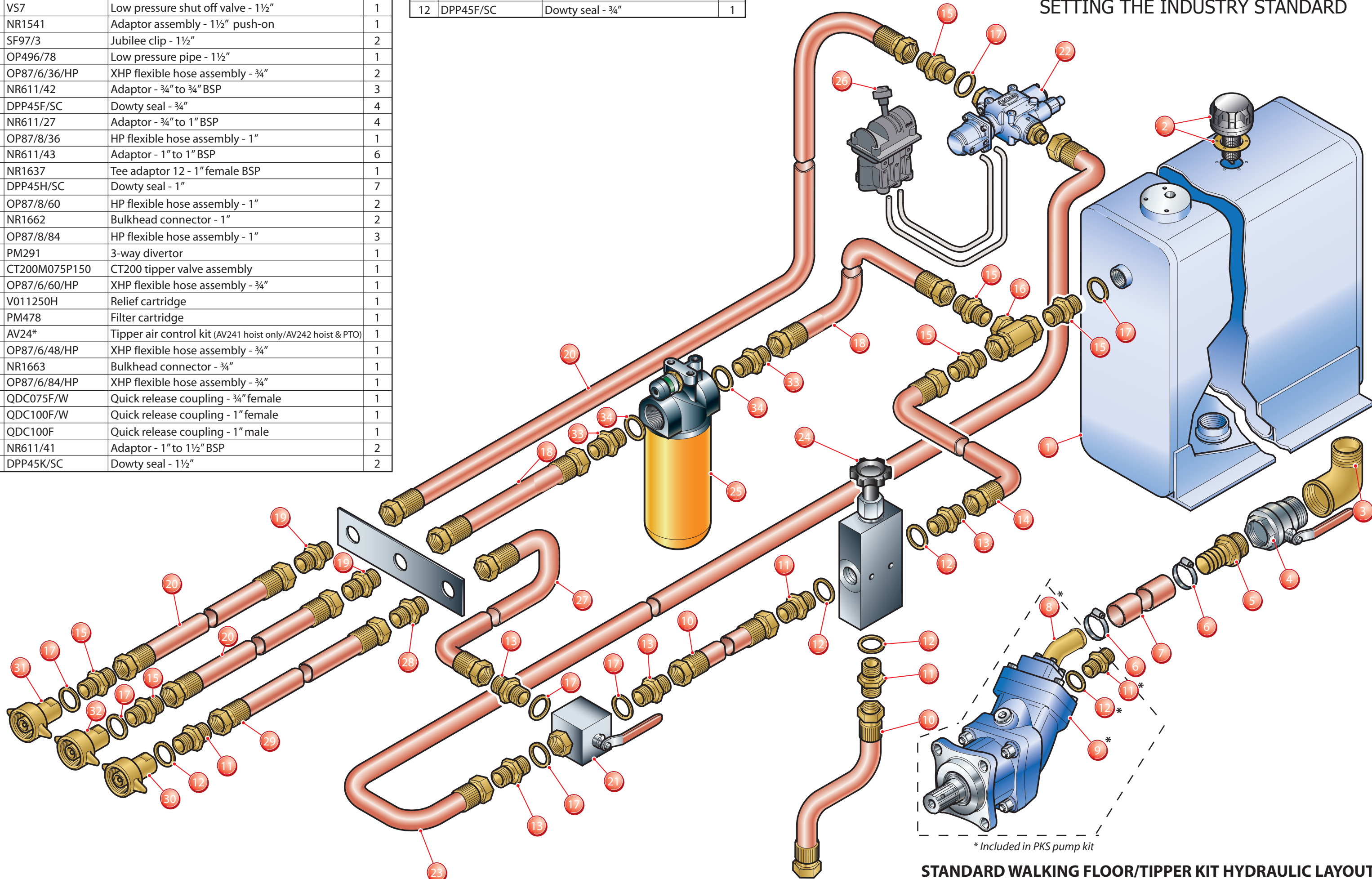
Item No.	Part No.	Description	Qty
1	OT*****	Oil tank (subject to kit specification)	1
2	AF83	Filler breather assembly	1
3	NR1544	Low pressure elbow - 1½"	1
4	VS7	Low pressure shut off valve - 1½"	1
5	NR1541	Adaptor assembly - 1½" push-on	1
6	SF97/3	Jubilee clip - 1½"	2
7	OP496/78	Low pressure pipe - 1½"	1
10	OP87/6/36/HP	XHP flexible hose assembly - ¾"	2
11	NR611/42	Adaptor - ¾" to ¾" BSP	3
12	DPP45F/SC	Dowty seal - ¾"	4
13	NR611/27	Adaptor - ¾" to 1" BSP	4
14	OP87/8/36	HP flexible hose assembly - 1"	1
15	NR611/43	Adaptor - 1" to 1" BSP	6
16	NR1637	Tee adaptor 12 - 1" female BSP	1
17	DPP45H/SC	Dowty seal - 1"	7
18	OP87/8/60	HP flexible hose assembly - 1"	2
19	NR1662	Bulkhead connector - 1"	2
20	OP87/8/84	HP flexible hose assembly - 1"	3
21	PM291	3-way divertor	1
22	CT200M075P150	CT200 tipper valve assembly	1
23	OP87/6/60/HP	XHP flexible hose assembly - ¾"	1
24	V011250H	Relief cartridge	1
25	PM478	Filter cartridge	1
26	AV24*	Tipper air control kit (AV241 hoist only/AV242 hoist & PTO)	1
27	OP87/6/48/HP	XHP flexible hose assembly - ¾"	1
28	NR1663	Bulkhead connector - ¾"	1
29	OP87/6/84/HP	XHP flexible hose assembly - ¾"	1
30	QDC075F/W	Quick release coupling - ¾" female	1
31	QDC100F/W	Quick release coupling - 1" female	1
32	QDC100F	Quick release coupling - 1" male	1
33	NR611/41	Adaptor - 1" to 1½" BSP	2
34	DPP45K/SC	Dowty seal - 1½"	2

PKS Pump Kit *

Item No.	Part No.	Description	Qty
8	NR1588	1½" push-on adaptor - 45 degree	1
9	EBA09022	Bent axis piston pump	1
11	NR611/42	Adaptor ¾" - ¾" BSP	1
12	DPP45F/SC	Dowty seal - ¾"	1

Edbro

SETTING THE INDUSTRY STANDARD



* Included in PKS pump kit

STANDARD WALKING FLOOR/TIPPER KIT HYDRAULIC LAYOUT

(1½" SUCTION LINE)